

West Yellowstone OHV/ATV MAP • SOUTH

iCafe Sabor!
www.cafesabor.com
(208) 558-9300
4298 US-20, ISLAND PARK, ID

QUICKPRINT
Local & Independently Owned
Shipping & Printing Center
PACKING • SHIPPING
RECEIVING SERVICES
DESIGN • PRINTING
PHOTOS PROCESSING
OFFICE SERVICES
FAX • NOTARY
West Yellowstone • MT | QuickPrintWY.com

YELLOWSTONE BARGAIN STORE
APPAREL • SOUVENIRS • GIFTS
25 YELLOWSTONE AVE

TERRANOVACABINS.COM
406.646.7200
BOOK TODAY
35 WILLOW CREEK ROAD
WEST YELLOWSTONE, MT 83756

THE PARLOR
PIZZA & ICE CREAM
THE PARLOR
781 MACDONALD
(208) 558-2450
4292 US Hwy 20 Island Park, ID
www.theparlorid.com

YELLOWSTONE TETON WILDERNESS
41,000 ACRES OF FUN
Visit YellowstoneTeton.org for lodging, maps, and itineraries.

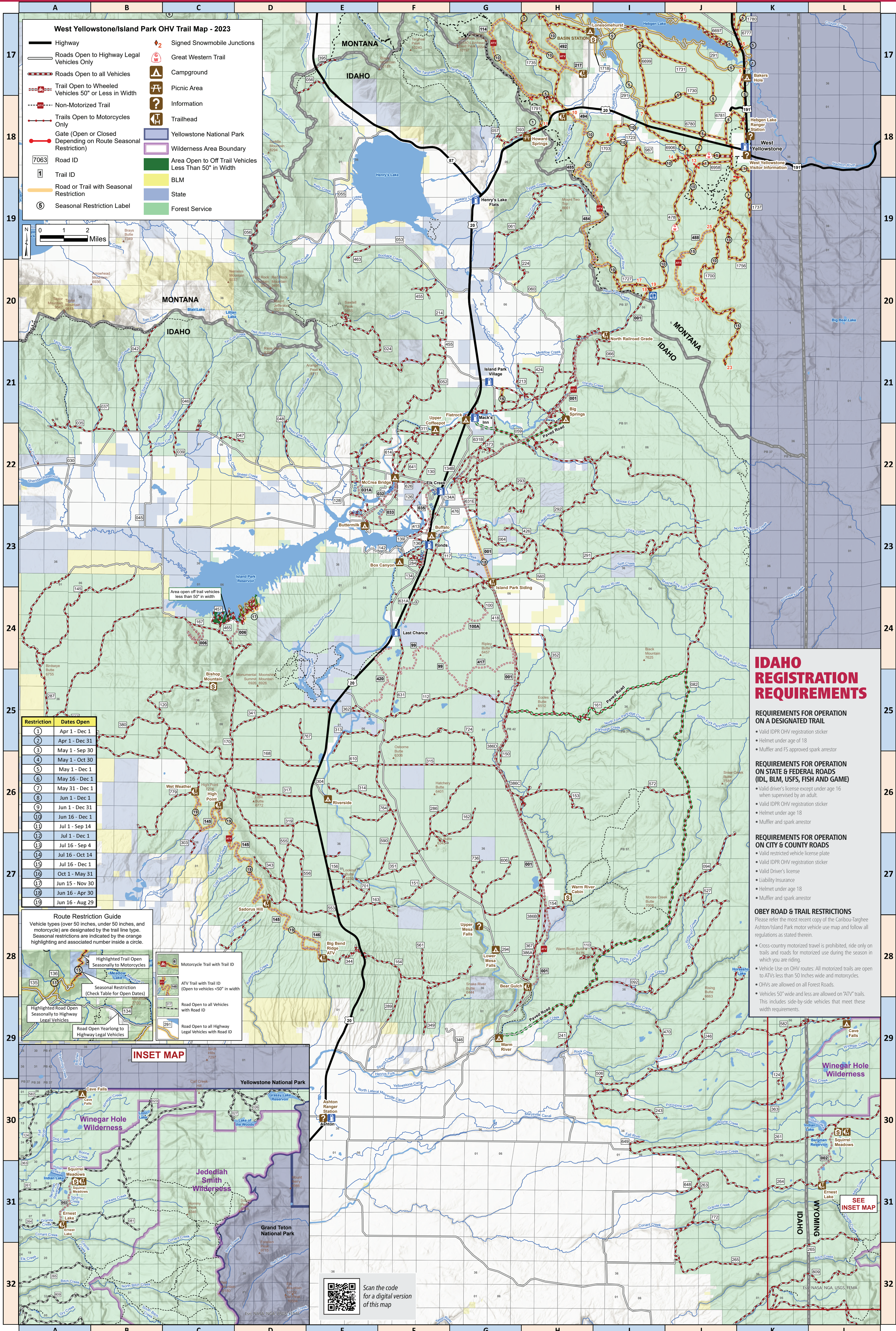
WEST YELLOWSTONE CHAMBER OF COMMERCE
1900 Yellowstone Ave., West Yellowstone, MT 83758
(208) 558-7101 • (406) 528-7442
www.westyellowstonechamber.com

WEST YELLOWSTONE VISITORS CENTER
1900 Yellowstone Ave., West Yellowstone, MT 83758
(208) 558-7101 • (406) 528-7442
www.westyellowstonevisitorscenter.com

WEST YELLOWSTONE CHAMBER OF COMMERCE
1900 Yellowstone Ave., West Yellowstone, MT 83758
(208) 558-7101 • (406) 528-7442
www.westyellowstonechamber.com

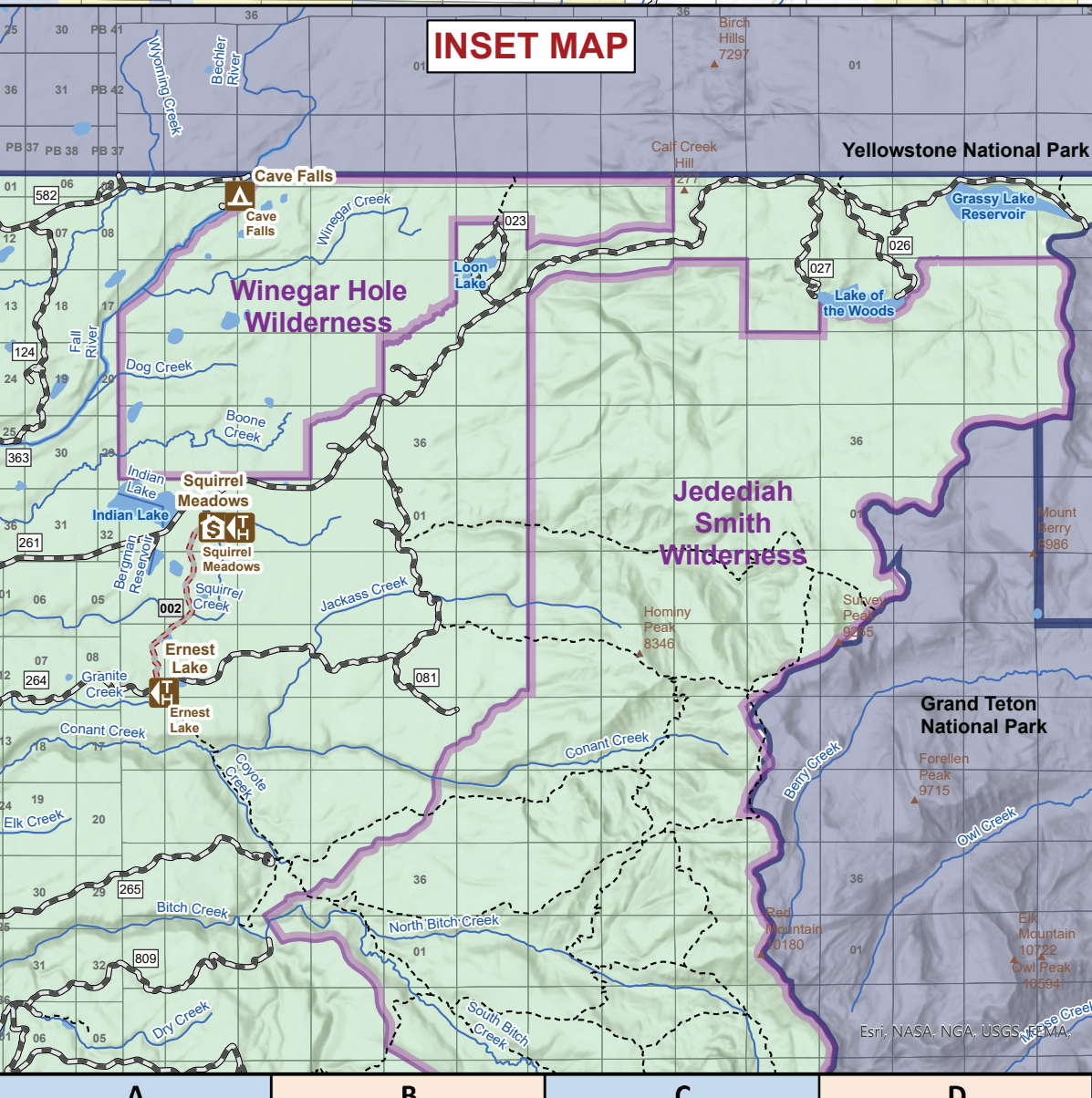
WEST YELLOWSTONE VISITORS CENTER
1900 Yellowstone Ave., West Yellowstone, MT 83758
(208) 558-7101 • (406) 528-7442
www.westyellowstonevisitorscenter.com

West Yellowstone SUMMER MOTORIZED RECREATION MAP
This map was made possible thanks to partnership between:
Yellowstone National Park, Grand Teton National Park, Idaho National Forest, and US Forest Service.



Restriction	Dates Open
1	Apr 1 - Dec 1
2	Apr 1 - Dec 31
3	May 1 - Sep 30
4	May 1 - Oct 31
5	May 1 - Dec 1
6	May 16 - Dec 1
7	May 31 - Dec 1
8	Jun 1 - Dec 1
9	Jun 1 - Dec 31
10	Jun 16 - Dec 1
11	Jul 1 - Sep 14
12	Jul 1 - Dec 1
13	Jul 16 - Sep 4
14	Jul 16 - Oct 14
15	Oct 1 - May 31
16	Oct 16 - May 31
17	Jun 15 - Nov 30
18	Jun 16 - Apr 30
19	Jun 16 - Aug 29

Route Restriction Guide
Vehicle types (over 50 inches, under 50 inches, and motorcycle) are designated by the trail line type. Seasonal restrictions are indicated by the orange highlighting and associated number inside a circle. This map shows popular routes in the West Yellowstone and Island Park areas. Not all roads and trails are identified. The map provides information on routes that may be more popular than other routes because they provide better loop riding, access to destinations, and scenic opportunities. This map does not display over-snow routes.



IDAHO REGISTRATION REQUIREMENTS

REQUIREMENTS FOR OPERATION ON A DESIGNATED TRAIL

- Valid IDPR OHV registration sticker
- Helmet under age of 18
- Muffler and FS approved spark arrestor

REQUIREMENTS FOR OPERATION ON STATE & FEDERAL ROADS (IDL, BLM, USFS, FISH AND GAME)

- Valid driver's license except under age 16 when supervised by an adult.
- Valid IDPR OHV registration sticker
- Helmet under age 18
- Muffler and spark arrestor

REQUIREMENTS FOR OPERATION ON CITY & COUNTY ROADS

- Valid IDPR OHV registration sticker
- Valid driver's license
- Liability Insurance
- Helmet under age 18
- Muffler and spark arrestor

OBEY ROAD & TRAIL RESTRICTIONS

Please refer the most recent copy of the Caribou-Targhee Ashton/Island Park motor vehicle use map and follow all regulations as stated therein.

- Cross-country travel is prohibited, ride only on trails and roads for motorized use during the season in which you are riding.
- Vehicle Use on OHV routes: All motorized trails are open to ATVs less than 50 inches wide and motorcycles.
- OHVs are allowed on all Forest Roads.
- Vehicles 50" wide and less are allowed on "ATV" trails. This includes side-by-side vehicles that meet these width requirements.

KNOW BEFORE YOU GO

The purpose of this map is to provide useful information that will help visitors best navigate the motorized routes of the West Yellowstone and Island Park areas for your enjoyment. The map also shows information regarding trailheads, campgrounds, non-motorized routes, and service information listed in the legend.

Travel restrictions in the West Yellowstone and Island Park areas are subject to change in response to future travel planning decisions. This map will be updated to best reflect conditions for visitor convenience and enjoyment. This is not a travel plan map. Official travel maps and other detailed information on travel restrictions are available from the Hegen Lake Ranger Station in West Yellowstone, Montana or the Island Park and Ashton Ranger Stations in Idaho. It is each visitor's responsibility to understand and obey all travel restrictions as well as posted signs. Comply with all Federal, State, and local laws and regulations in your responsibility.

This map shows popular routes in the West Yellowstone and Island Park areas. Not all roads and trails are identified. The map provides information on routes that may be more popular than other routes because they provide better loop riding, access to destinations, and scenic opportunities. This map does not display over-snow routes.

When the West Yellowstone and Island Park areas routes are identified by a vehicle type that is compatible with the route width and most capable of navigating the route - with a rider/driver possessing the skill required. The map does not identify difficulty or skill requirements of motorized routes.

When the West Yellowstone & Island Park areas, most motorized routes are open to

OHV SAFETY

Review this checklist before you ride to ensure a safe trip.

- Never Ride Alone! Ride with a partner.
- Be certain each rider has a map and knows where the group is headed.
- Before leaving the trailhead, choose rest stops and meeting places for your group, in case you become separated.
- Stay on the correct route if you become separated, and let the group find you.
- Check that your OHV is in proper working condition; all fluids are topped off; there are no loose or broken parts; and that your spark arrestor is in good condition and has not been modified. Be prepared for vehicle break downs.
- Ride within the limits of your skill and endurance.
- Complete a rider safety course before operating an ATV or motorcycle.
- Do not use drugs or alcohol - riding a motorcycle or ATV requires a high degree of skill and judgment! Ride sober!
- Keep headlights on at all times so others can see you.
- Provide direct parental supervision for riders under the age of 13.
- Never carry passengers on an OHV unless it's designed for that purpose.
- Do not use drugs or alcohol - riding a motorcycle or ATV requires a high degree of skill and judgment! Ride sober!
- Carry basic tools and survival gear, including plenty of drinking water.
- Wear appropriate protective gear including a helmet, eye protection, long-sleeved shirt, sturdy pants, over-the-ankle boots, and gloves. Dress for the weather, but never wear anything looser than what is on wheels!
- Helmet - A helmet is the single most important piece of protection that can be worn.
- Eye Protection - Always wear goggles or a bubble visor shield.

RIDE RESPONSIBLY AND ETHICALLY

CARING FOR PEOPLE, WILDLIFE, AND THE LAND

Before you leave, check weather conditions and be prepared. Trail and road conditions can change depending on elevation, terrain, soil types, and weather. Drive responsibly and stay in control. Be honest about your skill level and other people's skill levels. Plan your trip based on the lowest skill level. Supervise children on OHVs carefully and set a good example. Ensure children have been trained in OHV safety and teach them by your example respect for the land.

Stay on the trail. Use switchbacks rather than cutting them. While climbing hills avoid wheel spin, and avoid brake-sliding when descending steep grades and switch backs to prevent gouging of the trail, which leads to greater water erosion damage.

Don't highmark trail or road embankments. Riding on the embankments loosens soil and removes vegetation that may cause the embankment to erode onto the road or trail creating hazards and increasing maintenance costs.

Respect private land. Please do not access these lands. If it is gated or signed, do not destroy property or take anything that does not belong to you.

Ride quietly. Respect other users as well as the wildlife along your route.

YOUNG RIDERS

- Always supervise your children when they are riding.
- Camping areas are not riding areas. Riding in, near or around campgrounds can impact soils and plants and is disrespectful of other campers.
- Riding OHVs in campgrounds is prohibited. Ride on designated motorized routes only!
- Anyone under the age of 12 may operate an OHV on unpaved roads if accompanied by an adult and the motorcycle or quadricycle is operated in a responsible and prudent manner.
- Always be sure your children use proper safety gear.
- Helmet can prevent and reduce the severity of head injuries. Helmet must meet DOT or Snell standards and be worn by those under 18 who operate or ride a motorcycle or quadricycle on streets or highways (MCA 61-9-417). Helmet is strongly recommended for ALL OHV operators and riders.

KNOW BEFORE YOU GO

wheeled vehicles 50 inches wide or less unless they are motorcycle only or non-motorized trails. Check with the Forest Service ranger stations for Travel Management restrictions.

TEMPORARY AND EMERGENCY CLOSURES
Designated roads, trails, and areas may be subject to temporary, emergency closures to protect the life, health, or safety of Forest Service visitors or the natural or cultural resources in these areas. On National Forest lands, violation of these prohibitions is punishable by a fine of not more than \$5,000 for an individual or \$10,000 for an organization, or imprisonment for not more than 6 months, or both (16 USC 551 and 18 USC 2559 and 3571).

CROSS-COUNTRY TRAVEL BY MOTORIZED WHEELED VEHICLES
Cross-country travel by motorized wheeled vehicles has been prohibited on Montana and Idaho National Forest System lands since 2001.

Wheeled motor vehicles may be parked off the edge of a route on National Forest lands when it is safe to do so without causing damage to resources or facilities, unless prohibited by state law or posted regulation.

When you park, stay as close to the route as possible, while ensuring that everyone can exit and enter your vehicle safely, that your vehicle and trailer are not impeding traffic along the route, and that you can safely unload your trail vehicles without entering the road right-of-way.

DISPERSED CAMPING
There are a number of camping opportunities in the West Yellowstone and Island Park areas. Most of the vehicle camping, however, is in 'dispersed' or undeveloped sites near the roads. Camp site selection must be completed by non-motorized means, and travel to the site must be by the most direct route. Please use existing routes whenever possible to reduce potential resource damage.